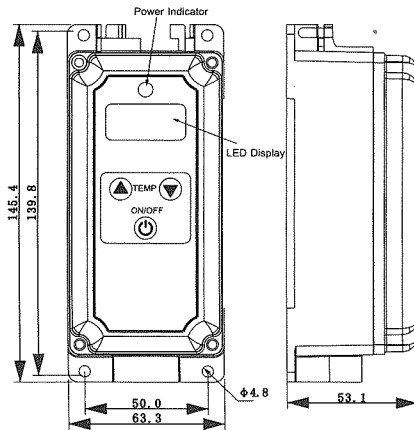


DSD601AD Instruction Manual



Specifications

Power Supply Input : 85VAC~275VAC 50/60Hz
Temperature Sensor Display Range: -49°F~239°F
Temperature Setting Range: -30°F~220°F
Temperature Accuracy: $\pm 0.5^\circ\text{F}$
Load Current: <30A
Overall Dimension: 125x83.5x30.5mm

Features

1. Temperature Setting

The temperature range displayed: -49°F~239°F, and the setting range is -30°F~220°F. Factory set at 68°F adjust the temperature by pressing button "▲" or "▼" 0.5°F each time.

2. Differential Setting

The differential setting range: $\pm 0.5^\circ\text{F} \sim \pm 15^\circ\text{F}$. Factory set at 1°F, hold the power button for 3 seconds and adjust by pressing button "▲" or "▼", 1°F steps.

3. Settings Protection

Settings will be saved when powered off, and recovered when powered back on.

4. Fault Indication

In the case of a malfunction, the screen will display E0 and the output will be shut down. The fault should be eliminated after the thermostat is turned off and on again.

Buttons Setting

Three buttons in total: "▲" "▼" "⏻"

1 "▲": Increase parameter (Temp or Diff)

2 "▼": Decrease parameter (Temp or Diff)

3 "⏻": Power on and off of the thermostat by quick pressing. (Sets differential Temp when held for 3 seconds with power off.)

Temperature Setting and Adjusting

Set the temperature by pressing "▲" "▼" when the thermostat is on, temperature set point will be displayed on the screen. The thermostat will display the current sensor temperature after 3 seconds of no buttons being pressed.

Differential Setting

With the power off, press and hold "⏻" button for 3 seconds, the current differential will be displayed. User can adjust the required differential by pressing "▲" "▼", differential setting will be saved after 3 seconds of no buttons being pressed.

Wiring Diagram

